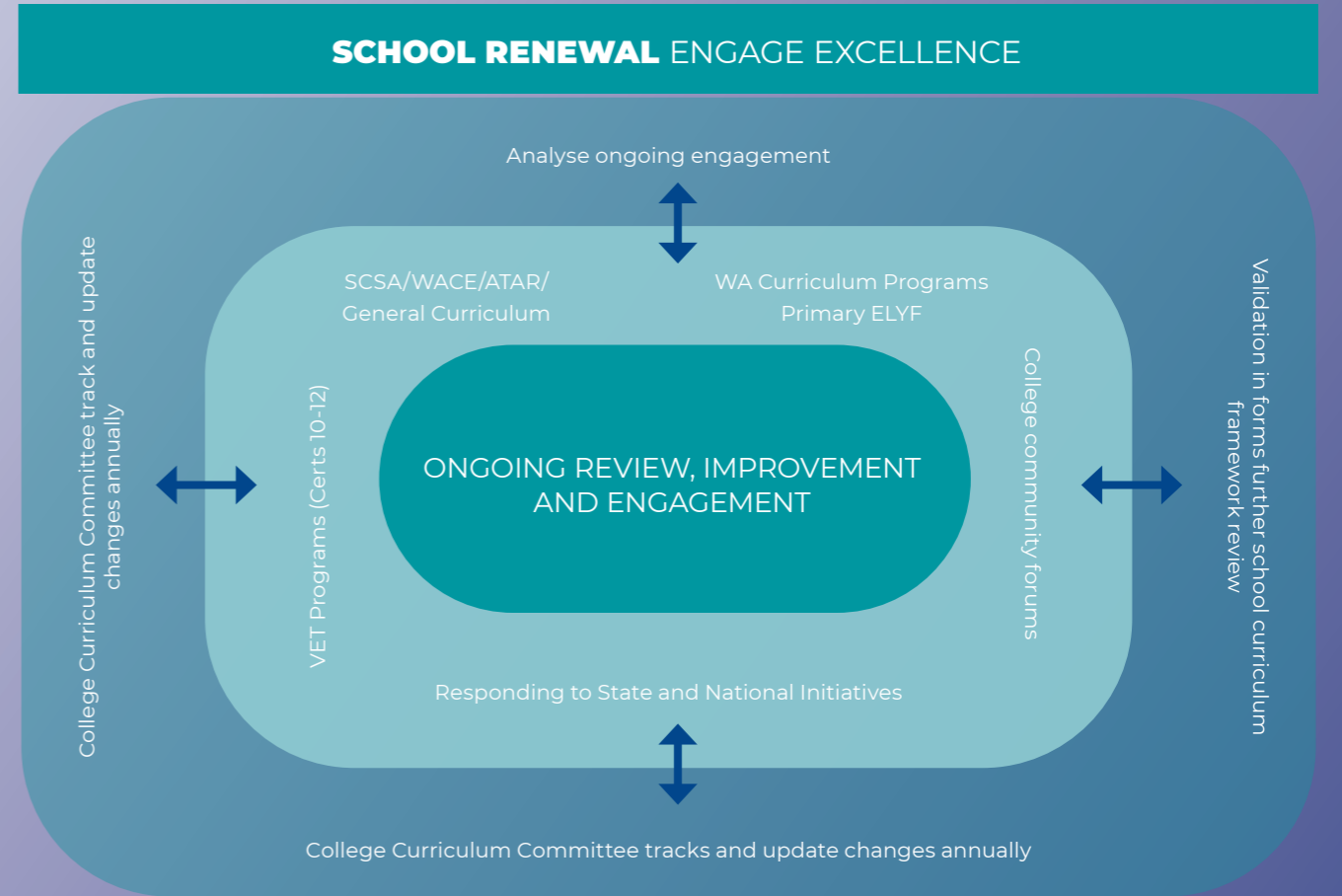
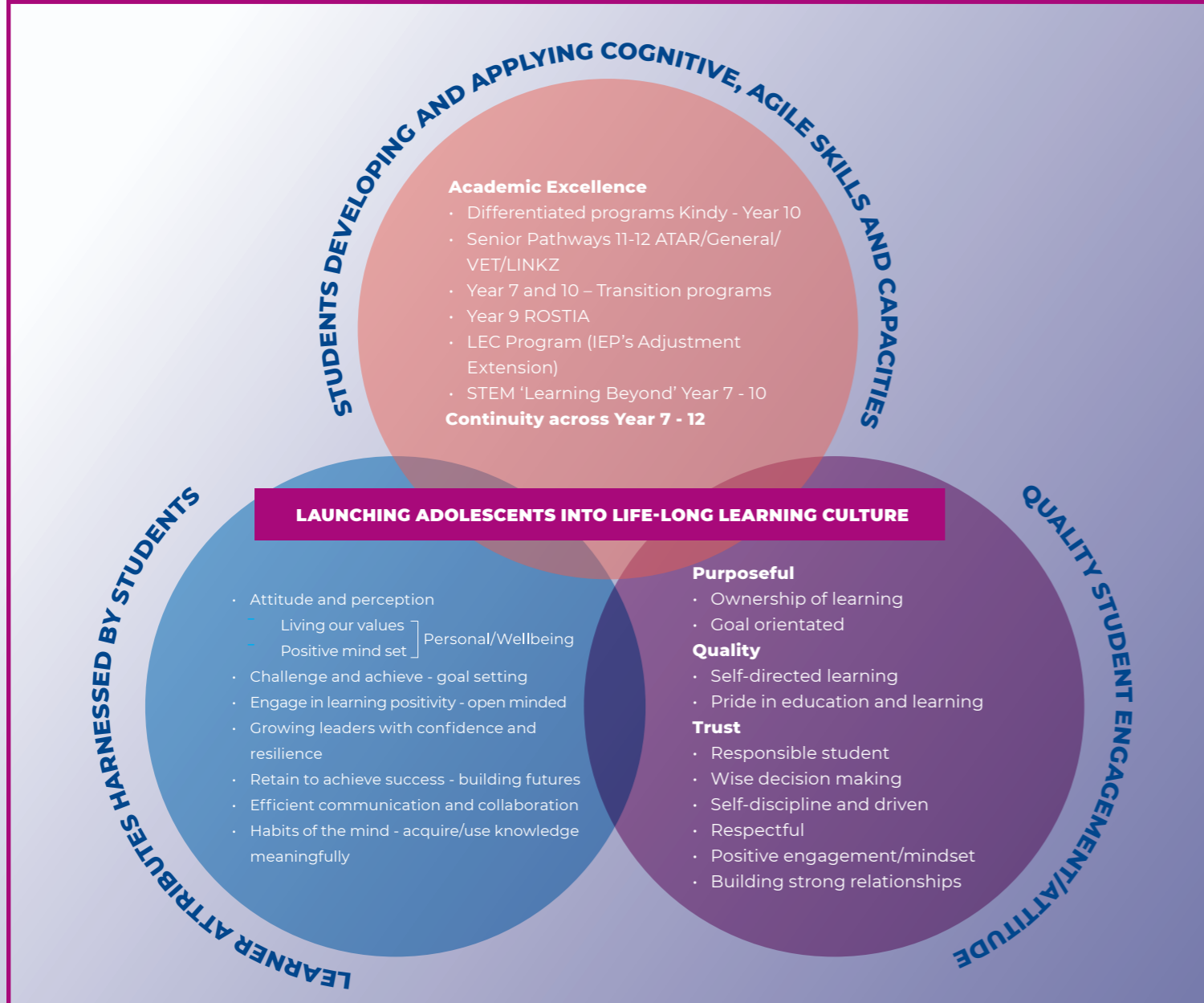


CURRICULUM FRAMEWORK

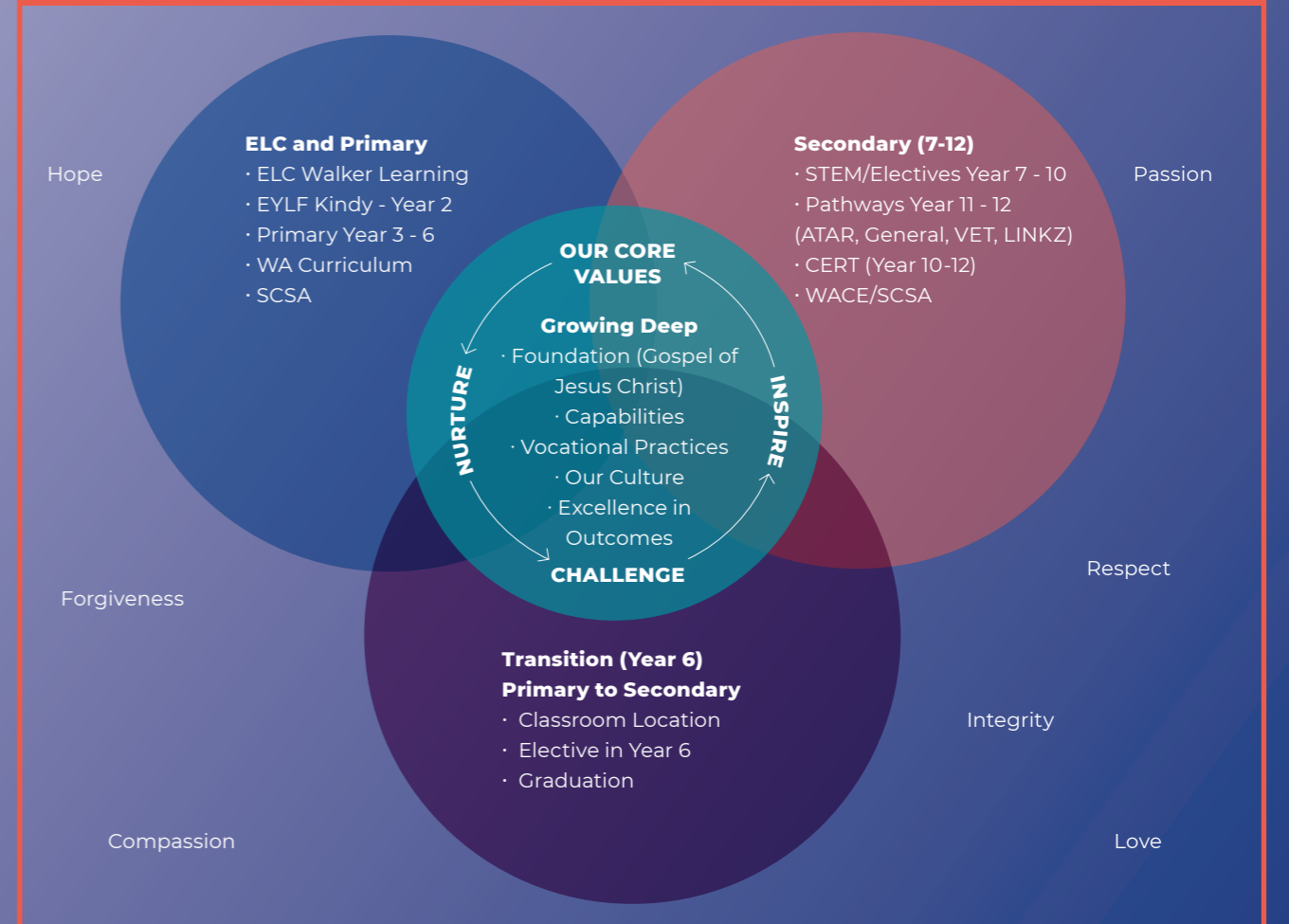
INSPIRING LIFE LONG LEARNING TO PRODUCE CONFIDENT, RESILIENT YOUNG PEOPLE



LAUNCHING ADOLESCENTS INTO LIFE-LONG LEARNING CULTURE



CHRISTIAN FOUNDATIONAL VALUES VS. CORE VALUES



Identifying and Developing Resources

- Library
- LA Budgets
- LEC – NCCD and AISWA Funding (State and Federal)
 - EA's and resources
- Community Resources
 - Incursions
- Canteen Online Order
- IT – Help Desk
- Uniform Shop
- LWLC - Facebook/Instagram/Website
- Pre-Kindy Program
- Down South Therapy Service
- Chaplain/Counsellor
- Pastor Local RMLC

Identify Effective Teaching and Learning Practice/Professional Development

- Staff PD – Week 0 / Term 2 Week 10
- PLAP – Individual PD required
- Induction Program for New Staff/Volunteers
- Mentor Program for Graduate Teachers
- Faculty and Pastoral Care Meetings Kindy to Year 12
- Literacy/Numeracy Focus – Learning LAB Kindy to Year 12
- NAPLAN
- OLNA
- Preparation for Student Success
- VET/Cert Delivery
- Quality differentiated programs Kindy to Year 12
- Walker Learning – Early Learning Centre to Year 2
- Growing Deep – Foundation as a Lutheran College
- Whole School Wellbeing Program (staff and students)

Strategic Intentions/Partnerships/Marketing/Promotions

Partnerships:

- LCA – Lutheran Church of Australia
- LEA - Lutheran Education Australia
- ALWS – Australian Lutheran World Service
- LESNW – Lutheran Education South Australia, Northern Territory, Western Australia
- DCCWA – District Church Council Western Australia
- AISWA – Association of Independent Schools of Western Australia
- KIC – Kwinana Industries Council
- ACC – RKAS
- Tertiary Institutions:
 - Curtin/Murdoch University
 - TAFE
 - RTOs

Teams:

- Exec Team
- LWLC Board
- Parents and Friends Association
- Ministry and Care Team
- Faculty and PC Teams (HOLA and Pastoral Care Leaders)
- Wellbeing Committee
- Chaplain/Counsellor Service
- Parent Interviews and Information Evenings
- Learning Labs - Literacy and Numeracy Focus (Kindy to Year 12)

Marketing/Promotions

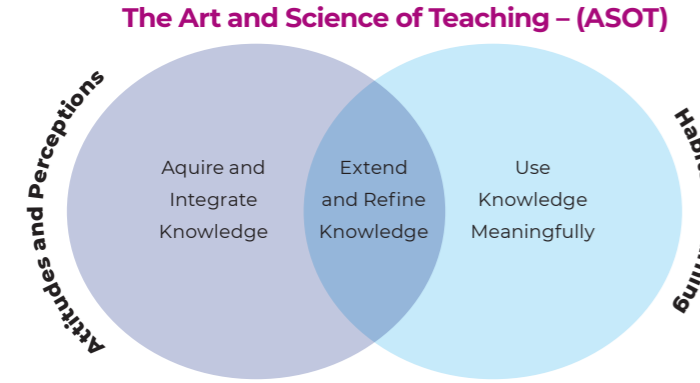
- imageseven
- Marketing Officer
- Regular – Instagram, Facebook, Website, Newsletter, Digital Notice Board
- Marketing Plan – yearly, various marketing options aligning strategic intentions
 - School Tours
 - Open Days – Kindy/Year 7
 - Sponsoring Opportunities
 - Q&A Sessions – Spec Programs

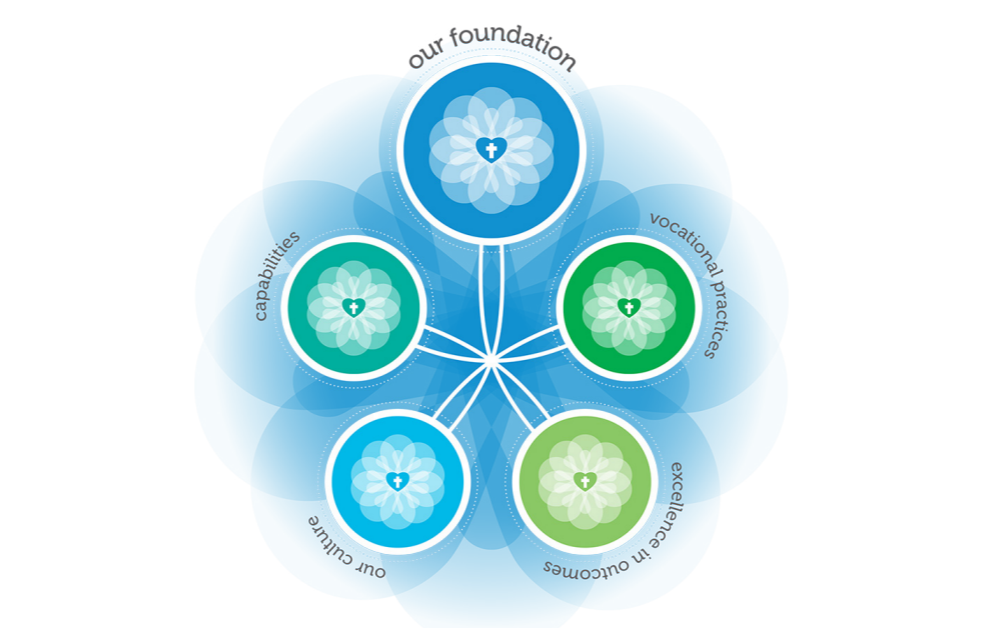
Planning for Teaching and Learning

- Subject Selection
- Counselling
- Diary
- Parent Information Evenings
- Elevate Year 10 - 12
- LEC-Support

- Multiple pathways Year 11 - 12
- OLNA and Foundation Courses
- NAPLAN - Preparation Program (Years 3, 5, 7, and 9)
- Positive Mindset and Goal Setting

The Art and Science of Teaching – (ASOT)





Australian Curriculum (WA Curriculum)

- Develop a range of capabilities in our young people
- Confident individuals who interact with others, act autonomously and regulate themselves.
- Responsible well-rounded citizens in society, can work with diverse communities, manage their rights and responsibilities and duties of citizenship.
- Attain a deep understanding of the Learning Areas
 - Christian Studies
 - HASS
 - English
 - Math
 - Technologies
 - Sciences
 - Languages
 - ARTS
 - Health and Physical Education

Reporting/Assessment Procedure

Primary

- ELC – Portfolios
- Year 1 - 6 Progress Report Semester 1 and 2
- Kindy/PP Progress Reports

Secondary

- Progress reports Year 7 - 12 Reports (Year 12, Semester 1)
- Feedback on Assessments – SEQTA

Information

- PIN Evening Kindy to Year 12
- SEESAW – Primary
- SEQTA Direct Message – Secondary
- Email
- Written Feedback – Assessment Tasks (Year 7 - 10)
- Parent, Teacher, Student Interviews
- Phone Call
- Parent Meetings

Systemic: Assessment

- On Entry Assessment Kindy to Year 12
- NAPLAN Year 3,5,7 and 9
- OLNA Year 10-12
- WACE Certificate Year 12
- ATAR/General/VET Pathways

Focus: Literacy, Numeracy, RAP/ Engaging 21st Century Teaching and Learning, WACE Achievement

General Capabilities

- Personal and Social Capacity
- Literacy
- Numeracy
- ICT
- Critical Thinking
- Ethical Behaviour
- Intercultural Understanding

Cross Curricular Priorities

- Sustainability
- ASIA/Australia
- Engagement
- Indigenous History and Culture

Assessment and Record Tracking

Provides purposeful and systemic collection of data for the purpose of making judgements about student progress and producing feedback and informing decision making regarding student learning.

- WA Curriculum Guidelines
- The Authority (SCSA) – WACE Requirements
- Growing Deep
- LEC – IEP/Adjustments
- STEM – Extension Program (Learning Beyond) (Year 7 - 10)
- SEQTA Data:
 - Communication
 - Results
 - Student Behaviour
- NAPLAN
- OLNA
- Online Entry Testing
- PAT Data

PRIMARY STRATEGY FRAMEWORK

<p>Reporting, Feedback and Communications</p> <ul style="list-style-type: none"> Parent Information Evenings/ Parent Interviews SEESAW Communication Platform-Results/Feedback Communication Tell Us Platform – Concerns/ Suggestions/Compliments/ Suggestion Box Kindy to Pre-Primary Portfolios/ Semester 2 Reports Year 1 - 2 and Year 3 - 6 Reports Semester 1 and 2 Rubrics – with assessments (sent home) 	<p>Pastoral Care/Wellbeing</p> <ul style="list-style-type: none"> Positive Education Primary Diary PATHS Program Brave Program Be You Program Protective Behaviours Program Incursion Programs - Wellbeing Chapel/Award Assemblies Chaplain Counsellor South Coast Therapy Services (Psychologist, Occupational Therapist, Audiologist, Speech Therapy) First Aid Incursion Armed for Life Program Bully Zero Program National Day of Action Against Bullying and Violence <p>Emergency Procedures</p> <ul style="list-style-type: none"> Lock Down Drill Evacuation Drill 	<p>Improvement/ Intervention Program</p> <ul style="list-style-type: none"> Literacy/Numeracy Focus Kindy - Year 6 7 Steps Maths Online/Prime Maths Explicit Teaching Sharp Reading Talk For Writing Student Behaviour Management Program – Magic 1, 2, 3 K - Year 6 Science of Reading <p>Learning Support</p> <ul style="list-style-type: none"> Education Assistant Support Intervention Program Science of Reading Jemm Jemm Emma Maths Reading and Spelling Diagnostic Tests Down South Coast Therapy Services (Psychologist, Occupational Therapist, Audiologist, Speech Therapy) 	<p>WA Curriculum</p> <ul style="list-style-type: none"> WA Curriculum Year 1 - 6 Early Years Learning Framework Kindy/Pre-Primary NAPLAN Year 3 - 5 PAT Testing On Entry Testing Australian Standardised Spelling Brightpath 	<p>Co-Curricular Programs</p> <ul style="list-style-type: none"> RAP – Reconciliation Action Plan Cultural Days – significant to Australia Christmas Celebrations – Lutheran Ethos Community Spirit Day Australian Lutheran World Service Fundraising Rockingham Mandurah Lutheran Church – Bible Giving Leadership Team - Year 6 Lutheran significant days/dates City of Rockingham Junior Council Sports/Clubs Accelerated Reading Program 	<p>Year 6 Transition into Secondary</p> <ul style="list-style-type: none"> Graduation Ceremony Electives in Year 6 – Student Leaders Buddy System – Secondary Leaders Student Leadership Team – Year 6 students Orientation Day/Meet Year 7 Teacher Armed for life Incursions
--	--	--	--	--	--

<p>ELC, Kindy, Pre-Primary</p>	<p>Kindy - Year 6</p> <ul style="list-style-type: none"> IEP General discussions Concerns SeeSaw - Communication Platform 	<p>Kindy - Year 6</p> <ul style="list-style-type: none"> Pastoral Care Program Incursion Plan – Wellbeing <ul style="list-style-type: none"> Police Fire Brigade Constable Care Safety House Chaplain – Pastoral Care Councillor – Students/Parents Chapel Services Primary School Assemblies <ul style="list-style-type: none"> Principal Head of Primary Magic 1.2.3 Student Behavior Program 	<p>Kindy - Year 6</p> <ul style="list-style-type: none"> Learning Enrichment Centre – Intervention Programs Individual Education Plans (IEP/Adjustments) Education Assistant Support Magic words PP- Year 6 On Entry Testing Heggerty Phonics Awareness PAT Testing –Year 2 - 6 NAPLAN Year 3 and 5 AR Reading Year 5 and 6 Prime MathematicsPre-Primary to Year 5 Talk 4 Writing –Kindy - Year 6 	<p>ELC - Year 2</p> <ul style="list-style-type: none"> NQA – National Quality Standard – Early Childhood Education Walker Learning Early Years Learning Framework Cubed Dibells Year 2 – WA Curriculum 	<p>ELC, Kindy, Pre-Primary</p> <ul style="list-style-type: none"> Kindy Café Messy Day Pirate/Princess Day Loud Socks Teddy Bears Picnic 	<p>Kindy - Year 6</p> <ul style="list-style-type: none"> Christmas Carols Mothers Day stalls Fathers Day stalls Reconciliation Week Naidoc Week Awards ceremonies: Effort/Academic/Sports
<p>Year 1-2</p>				<p>Year 3 - 6</p> <ul style="list-style-type: none"> WA Curriculum – School Curriculum and Standards Authority Language Other Than English – Japanese Arts Drama 	<p>Year 2 - 5</p> <ul style="list-style-type: none"> LWLC Reconciliation Action Plan Excursions Incursions Year 4 Camp IT Club Arts Club CPSSA - Sports 	
<p>Year 3-5</p>				<p>Year 6</p> <ul style="list-style-type: none"> Wood Food Technologies Media Textiles Music Instrument – Brass 	<p>Year 6</p> <ul style="list-style-type: none"> Camps/Excursions/Incursions Graduation Transition to Year 7 Student Leadership Team CPSSA - Sports ART Club IT Club 	
<p>Year 6</p>						

<p>WA Curriculum - Schools Curriculum and Standards Authority</p> <ul style="list-style-type: none"> Year 7 - 10 – Electives Year 11 - 12 – Electives and Pathways Certificate Courses (ATAR/General/VET/ LINKS) <p>Core Subjects</p> <ul style="list-style-type: none"> English Humanities and Social Sciences Science Mathematics Physical Education 	<p>Curriculum Support</p> <ul style="list-style-type: none"> Foundation Courses Maths/English Year 10 - 12 Learning Enrichment Centre – Education Assistant Support Individual Education/ Adjustment Plans Subject Counselling OLNA Support <p>Programs</p> <ul style="list-style-type: none"> Elevate Year 10 - 12 Revise Online Year 11 - 12 Education Perfect Year 7 - 10 English/HASS Maths Online Year 7 - 10 Chemistry Quiz/Big Science Competition STILE Year 11 - 12 	<p>Specialist Programs</p> <ul style="list-style-type: none"> Outdoor Education Netball Program – Development, Elite, Squads, Scholarship Basketball Year 7 - 10 Learning Beyond Year 7 - 9 (STEM) ACER Scholarship Program Year 7 - 12 Music Scholarship Program Forensic Science Lit/English Extension = GATE 	<p>Endorsed Programs WACE Credit</p> <p>Year 10 - 12 KIC</p> <ul style="list-style-type: none"> iWoman iDiversity iMen iScience iConference Community Service Employment Advantage Duke of Edinburgh 	<p>Co-Curricular/ Cultural Activities</p> <p>Whole School Community Spirit Day</p>	<p>Assessment/ Reporting</p> <ul style="list-style-type: none"> Progress Reports – Sequences End of Semester 1 and 2 Parent Information Evenings Parent Interviews SEQTA Year 7 - 12 Communications Results-marking and release on SEQTA – two week turnaround 	<p>Pastoral Care/ Wellbeing/Student Voice</p> <ul style="list-style-type: none"> Student Leadership Team – Primary and Secondary Tell Us Platform – Complaints, Concerns and Compliments (LWLC Portal) Suggestion Box – Student Services Counsellor Chaplain PC Teacher/Year Level Coordinators Elevate Program South Coast Therapy Services (Psychologist, Occupational Therapist, Audiologist, Speech Therapy) Bully Zero Program National Day of Action against Bullying and Violence 	<p>Learning Support</p> <ul style="list-style-type: none"> Learning Enrichment Centre – Education Assistants Modified Programs Individual Education Plan/Adjustment Plans Social Emotional Plans Special Considerations PAT Testing NAPLAN OLNA ATAR Exams/External Set Tasks Intervention Programs – Jemm, Jemm Maths Foundation Courses Tutoring Sessions Homework Club 	<p>Year 12 Transition Pathways</p> <ul style="list-style-type: none"> University TAFE Workplace Uni Entry Program Uni Ready - Curtin University TLC Murdoch University UWA - gain credit to state courses
---	---	--	---	---	--	---	---	---

Year 7	Year 7 Term Electives		Year 7 - 8	Year 7 - 9	Year 7 - 12	Year 7 - 8	Year 7 - 12	Year 7 - 10	Year 7 - 8
Year 8	Year 8 Term Electives		<ul style="list-style-type: none"> Specialist Netball Program Basketball Program STEM Learning Beyond/VR (Virtual Reality Program) Concert Band/Music 	Christian Studies	<ul style="list-style-type: none"> ACC Sport Carnival RKAS – Rockingham Kwinana Associated Schools Sport ACC Sport Swimming/Athletics Cross Country Pedal Prix (Year 6 - 12) Chess Club Mine Craft Club Productions Musical Show Case Camps, Incursions, and Excursions Aus Significant Cultural Days RAP – Reconciliation Action Plan – Indigenous Significant Days/ Celebrations SPARK Art Exhibition ROSTIA – Year 9 Formal Year 11 - 12 Lutheran significant days/dates River Cruise Year 10 BStreetSmart Year 7 BBQ ALWS Incursion Hosting Japanese Students Japan Trip 	<ul style="list-style-type: none"> NAPLAN PAT Testing Reporting Feedback – Semester 1 and 2 SEQTA 	<ul style="list-style-type: none"> Student Voice – Tell Us Platform and Student Leadership Team (House Captains, Exec and Reps from Year Levels) Suggestion Box – Concerns Complaints/Compliments Keeping Safe Curriculum Incursion Plan Wellbeing <ul style="list-style-type: none"> Cyber Safety Police Officer Talks Drugs, Alcohol and Vaping Bullying Armed for Life – Programs 	<ul style="list-style-type: none"> Modified Programs 	<ul style="list-style-type: none"> Awards Evenings – Semesterly and Yearly Excursions/Camps
Year 9	Year 9 Semester Electives	Year 9	Year 9	Year 9		Year 9			Year 9
Year 10	Year 10 Semester Electives	Year 10	Year 10	Year 10		Year 10 - 12			Year 10
Year 11	Year 11 - 12	Year 11 - 12	Year 11 - 12	Year 11 - 12					Year 11 - 12
Year 12									